



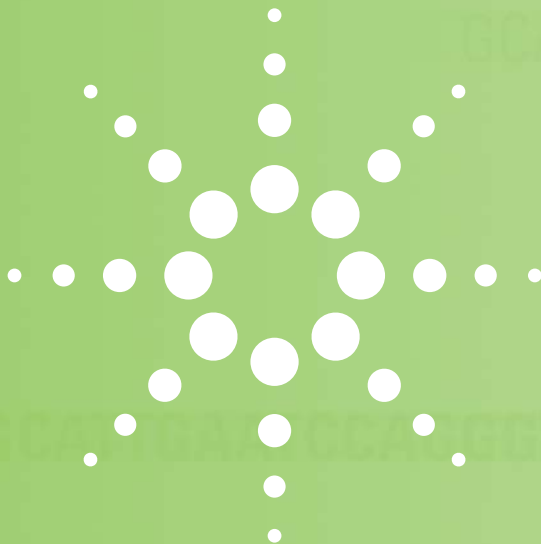
Consumables and supplies

Agilent 2100 bioanalyzer

Agilent 3100 OFFGEL fractionator



Agilent Technologies



Consumables and supplies

- Agilent 2100 bioanalyzer
- Agilent 3100 OFFGEL fractionator

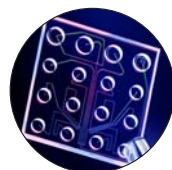
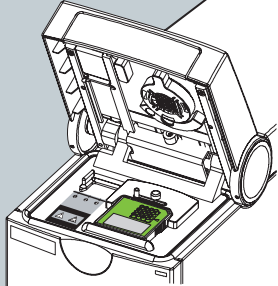
The ordering information presented in this mini-catalog is valid as of August 2007.



Agilent Technologies is a leading provider of life science and chemical analysis solutions. We offer systems for the acquisition and interpretation of biological and chemical information – from sample handling, to analysis, data management and reporting. Let us provide you with the right solution for your success.

Whatever your life science needs, Agilent Technologies has the solution. We are committed to providing you with superior technology designed for maximum productivity and cost effectiveness.





The 2100 bioanalyzer is a unique analysis tool capable of handling nucleic acids, proteins and cells on one platform.

When combined with any one of our kits, lab-on-a-chip technology can revolutionize your laboratory.

One of the many benefits the 2100 bioanalyzer has over conventional bioanalytical methods is the elimination of time consuming procedures – you enjoy standardized handling and interpretation of data. And as our portfolio of lab-on-a-chip kits continues to expand, you will benefit from the wide range of applications to which the technology can be used. Lab-on-a-chip kits simplify the process of data gathering and analysis down to three quick and easy steps:

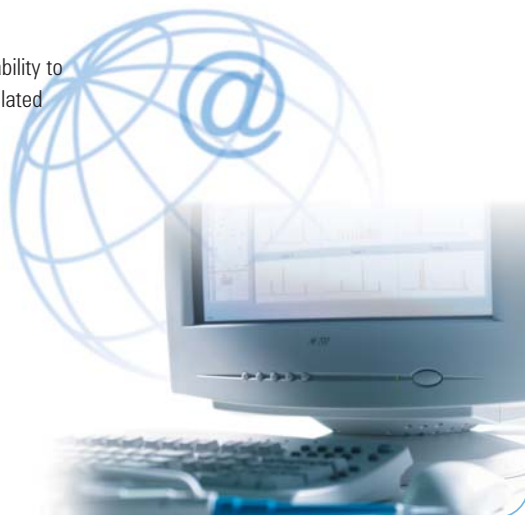
Load sample, run analysis, view data.

The 2100 bioanalyzer utilizes micro-fabricated chips with up to 12-wells requiring minimum sample consumption, in the 1–4 μL range. Prepackaged reagents included with the lab-on-a-chip kits help to speed up the entire process.

The 2100 bioanalyzer with lab-on-a-chip technology will increase the efficiency of your analysis and the productivity of your day.

- ♦ With its single, compact system architecture the 2100 bioanalyzer integrates sample handling, separation, detection and data analysis, all in the name of speed.
- ♦ Eliminate potential mistakes that can occur while interpreting and storing data. The 2100 bioanalyzer automatically incorporates steps some researchers might otherwise ignore in the interest of time.

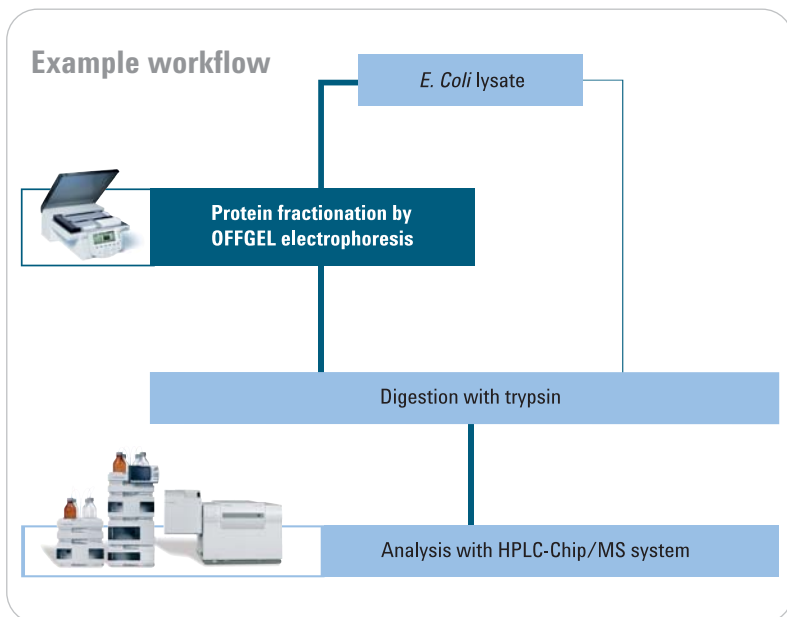
- ♦ The 2100 bioanalyzer helps to optimize PCR reactions for sequencing, cloning and typing. When used in conjunction with the **DNA kits**, it provides higher sensitivity, improved sizing accuracy and automated, reproducible quantitation, crucial for RT-PCR and quantitative PCR.
- ♦ Catch RNA degradation with sample amounts as low as 5ng of total RNA and automatically detect ribosomal RNA contamination in mRNA using the **RNA Nano kits**. The 2100 bioanalyzer helps guarantee high quality RNA for microarray analysis.
- ♦ DNA and RNA kits enable you to check the quality of probes and targets in your **microarray gene expression or QPCR analysis**. Agilent also provides the full solution for gene expression analysis.
- ♦ The new **kits for protein 230 and protein 80** are fast and reliable assays capable of analyzing a multitude of different protein samples. Used with the 2100 bioanalyzer they can analyze ten, 4 μ l samples in less than 30 minutes from 5 up to 230 kDa.
- ♦ Agilent also offers a pressure cartridge, cell fluorescence software and **cell kit** for multiple types of cell assay applications. Combined with the 2100 bioanalyzer and its sophisticated software, this makes performing simple flow cytometric analyses a reality, even for the smallest lab.
- ♦ Network and share electronic data immediately. Quantitative results, in addition to electronically stored protocols and parameters, enhance your lab's QA/QC practices.
- ♦ Upgrade to 21 CFR Part 11 capability to use the 2100 bioanalyzer in regulated environments through a simple software addition.





Easy integration into any protein analysis workflow

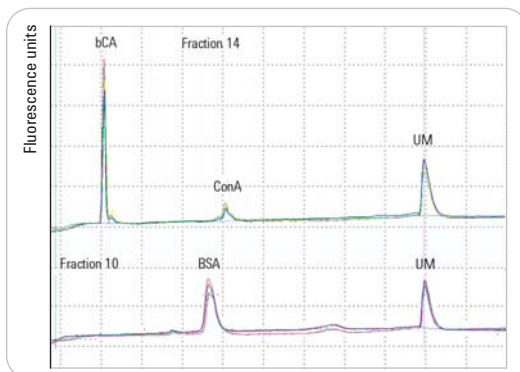
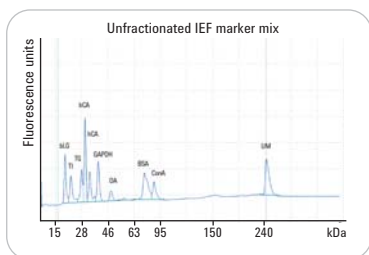
Whether your task is biomarker discovery, protein identification or purification of functional proteins or peptides, the Agilent 3100 OFFGEL Fractionator fits into any protein analysis workflow. Integration of the OFFGEL system is easy and ultimately increases sensitivity of subsequent MS detection.



Adding OFFGEL fractionation into the workflow prior to digestion significantly increases the number of proteins and peptides identified by subsequent HPLC-Chip/MS analysis.

Benefits of the Agilent 3100 OFFGEL Fractionator

- pl-based OFFGEL fractionation with liquid-phase recovery for easy transfer to downstream techniques such as LC/MS
- Reproducible fractionation with resolution as low as 0.1 pH for maximum MS sensitivity
- Compatibility with up- or downstream techniques such as immunodepletion, LC/MS or gel-based analysis for maximum flexibility
- pl values obtained act as additional validation parameters of MS hits and can be used to search for peptides with charged posttranslational modifications (PTMs)
- All additives can easily be removed after fractionation to avoid interference with nano-electrospray and MS detection
- Fractionation of up to 16 samples in parallel on two trays (eight samples each) for highest throughput
- Broad loading capacity from 50 µg to 5 mg of sample for analytical applications or maximum enrichment of low abundance proteins
- OFFGEL mode as well as conventional isoelectric focusing (IEF) based on immobilized pH gradient (IPG) gels



Analysis of a protein IEF marker mix with the Agilent 2100 bioanalyzer before and after OFFGEL electrophoresis (24 fractions, pH 3-10). The overlay of electropherograms from five independent fractionations shows excellent reproducibility (UM – upper marker, bCA – bovine carbonic anhydrase II, BSA – bovine serum albumine, ConA – conalbumine).

Agilent 2100 bioanalyzer

DNA solutions	1
DNA 1000 kits	
DNA 7500 kits	
DNA 12000 kits	
Cooled DNA 1000 reagents and supplies	
Cooled DNA 7500 reagents and supplies	
Cooled DNA 12000 reagents and supplies	
RNA solutions	3
RNA 6000 Nano kits	
Cooled RNA 6000 Nano reagents and supplies	
RNA 6000 Pico kits	
Cooled RNA 6000 Pico reagents and supplies	
Small RNA kits	
Cooled Small RNA reagents and supplies	
Protein solutions	5
Protein 230 kits	
Cooled protein 230 reagents and supplies	
Protein 80 kits	
Cooled protein 80 reagents and supplies	
Cell solutions	7
Cell fluorescence kits	
Cell fluorescence checkout kit	
Services and software	9
DNA/RNA assays operational service	
Protein assays operational service	
Cell assays operational service	

Contents

Page

Accessories

10

- Test chip bundle
- 16-pin bayonet cartridge
- Pressure cartridge
- Chip priming station
- Cell test chip kit

Spare Parts

11

- Adjustable clip
- Gasket kit for chip priming station
- Fuse for power supply
- RS 232 connector cable
- Pressure adapter kit
- Vortex mixer adapter

Application notes

12

Agilent 3100 OFFGEL fractionator

Kits for OFFGEL electrophoresis mode

13

- Starter kit
- Low resolution kit, pH 3-10
- High resolution kit, pH 3-10
- Low resolution kit, pH 4-7
- High resolution kit, pH 4-7
- OFFGEL protein test sample

Spare parts

- Tray set
- Electrode assembly

Application notes

14

DNA solutions



Description

Order No.

DNA 1000 kits

5067-1504

For high resolution sizing and quantitation of dsDNA fragments from 25 to 1000 bp.
Kit includes:
Reagents, supplies, 25 chips, 1 cleaning chip, 1 syringe and reagent kit guide.

DNA 7500 kits

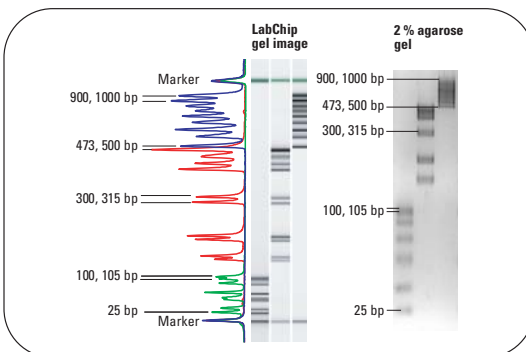
5067-1506

For accurate sizing and quantitation of dsDNA fragments from 100 to 7500 bp.
Kit includes:
Reagents, supplies, 25 chips, 1 cleaning chip, 1 syringe and reagent kit guide.

DNA 12000 kits

5067-1508

For sizing and quantitation of dsDNA fragments from 100 to 12000 bp.
Kit includes:
Reagents, supplies, 25 chips, 1 cleaning chip, 1 syringe and reagent kit guide.



For competitive PCR it is important to get good resolution over the entire size range of PCR products. When analyzing a mixture of different PCR products, the DNA1000 kit outperforms a traditional slab gel. In addition, accurate quantitative data is obtained, which allows discrimination of minute differences in the amplified amounts.

DNA cooled reagents and supplies

Description

Order No.

Cooled DNA 1000 reagents and supplies

5067-1505

For use with the Agilent 2100 bioanalyzer and DNA 1000 kits.
Comprises reagents and supplies box and appropriate cool pack.

Cooled DNA 7500 reagents and supplies

5067-1507

For use with the Agilent 2100 bioanalyzer and DNA 7500 kits.
Comprises reagents and supplies box and appropriate cool pack.

Cooled DNA 12000 reagents and supplies

5067-1509

For use with the Agilent 2100 bioanalyzer and DNA 12000 kits.
Comprises reagents and supplies box and appropriate cool pack.

Analytical Specifications	Agilent DNA 1000 Assay	Agilent DNA 7500 Assay	Agilent DNA 12000 Assay
Sizing range	25–1000 bp	100–7500 bp	100–12000 bp
Typical sizing resolution	± 5 bp 25–100 bp ± 5 % 100–500 bp ± 10 % 500–1000 bp	± 5 % 100–1000 bp ± 15 % 1000–7500 bp	± 5 % 100–1000 bp ± 15 % 1000–12000 bp
Sizing accuracy	± 10 %* (for ladder as sample)	± 10 % (for ladder as sample)	± 15 % (for ladder as sample)
Sizing reproducibility	5 % CV (for ladder as sample)	5 % CV (for ladder as sample)	5 % CV (for ladder as sample)
Quantitation accuracy	20 %* CV (for ladder as sample)	20 % CV (for ladder as sample)	25 % CV (for ladder as sample)
Quantitation reproducibility	25-500 bp: 15 % CV; 500-1000 bp: 5 % CV (for ladder as sample)	100-1000 bp: 10 % CV; 1000-7500 bp: 5 % CV (for ladder as sample)	100-1000 bp: 15 % CV; 1000-12000 bp: 10 % CV (for ladder as sample)
Qualitative range	0.5–50 ng/μL	0.5–50 ng/μL	0.5–50 ng/μL
Maximum salt	250 mM for KCl or NaCl, 15 mM for MgCl ₂	250 mM for KCl or NaCl, 15 mM for MgCl ₂	250 mM for KCl or NaCl, 15 mM for MgCl ₂

* Some fragments below 70 bp may deviate from the above specifications.

Physical Specifications			
Analysis run time	35 minutes	30 minutes	30 minutes
Number of samples	12 samples/chip	12 samples/chip	12 samples/chip
Sample volume	1 μL	1 μL	1 μL
Kit stability	4 months (Storage temperature see individual box)	4 months (Storage temperature see individual box)	4 months (Storage temperature see individual box)

RNA solutions



Description

Order No.

RNA 6000 Nano kits

5067-1511

For analysis and quantitation of messenger and total RNA in the low to mid nanogram range.

Kit includes:

Reagents, supplies, 25 chips, 2 cleaning chips, 1 syringe, and reagent kit guide. A lower marker and ladder is included with the RNA Nano reagents.

RNA 6000 Pico kits

5067-1513

For analysis and quantitation of messenger and total RNA in the low to high picogram range.

Kit includes:

Reagents, supplies, 25 chips, 2 cleaning chips, 1 syringe, and reagent kit guide. A lower marker and ladder is included with the RNA Pico reagents.

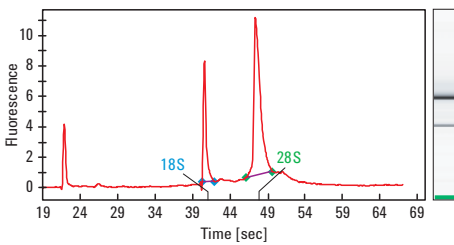
Small RNA kits

5067-1548

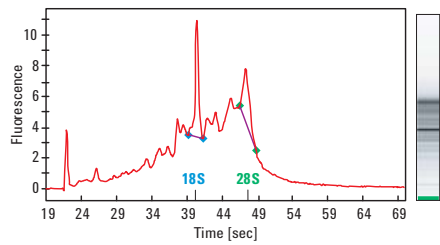
For analysis of small RNAs in the range of 6 – 150 nt in low picogram sensitivity.

Kit includes:

Reagents, supplies, 25 chips, 2 cleaning chips, 1 syringe, and reagent kit guide. A lower marker and ladder is included with the small RNA reagents.



Intact total RNA



Degraded total RNA

RNAse degradation of RNA samples is a common reason for failed experiments. The Agilent 2100 bioanalyzer shows the results of an RNA quality analysis in both gel-like image as well as electrophoretic data making it easy to detect even small degradation effects.

RNA cooled reagents and supplies

Description

Order No.

Cooled RNA 6000 Nano reagents and supplies

For use with the Agilent 2100 bioanalyzer and RNA 6000 Nano kits. Comprises reagents and supplies box and appropriate cool pack.

5067-1512

Frozen RNA 6000 Nano ladder

For use with the Agilent 2100 bioanalyzer and RNA 6000 Nano kits. Comprises frozen Nano Ladder

5067-1529

Cooled RNA 6000 Pico reagents and supplies

For use with the Agilent 2100 bioanalyzer and RNA 6000 Pico kits. Comprises reagents and supplies box and appropriate cool pack.

5067-1514

Frozen RNA 6000 Pico Ladder

For use with the Agilent 2100 bioanalyzer and RNA 6000 Nano kits. Comprises frozen Pico Ladder.

5067-1535

Cooled Small RNA reagents and supplies

For use with the Agilent 2100 bioanalyzer and Small RNA kits. Comprises reagents and supplies box and appropriate cool pack.

5067-1549

Frozen Small RNA Ladder

For use with the Agilent 2100 bioanalyzer and Small RNA kits. Comprises frozen Small RNA Ladder.

5067-1550

Analytical Specifications	RNA 6000 Nano Total RNA Assay	RNA 6000 Nano mRNA Assay	RNA 6000 Pico Total RNA Assay	RNA 6000 Pico mRNA Assay	Small RNA Assay
Quantitative range	25–500 ng/μL	25–250 ng/μL	–	–	50-2000 pg/μL of purified miRNA in water
Qualitative range	5–500 ng/μL	25–250 ng/μL	50–5000 pg/μL	250–5000 pg/μL	50-2000 pg/μL of purified miRNA in water
Quantitation reproducibility	10 % CV	10 % CV	20 % CV	20 % CV	25 % CV
Quantitation accuracy	20 % CV*	20 % CV*	30 % CV*	30 % CV*	50 pg/μL in water**
Buffer compatibility*	100 mM Tris or 125 mM NaCl or 15 mM MgCl ₂	100 mM Tris or 125 mM NaCl or 15 mM MgCl ₂	50 mM Tris or 50 mM NaCl	50 mM Tris or 50 mM NaCl	10 mM Tris, 0.1 mM EDTA

* Due to the high sensitivity of the assay, different ions and higher salt concentrations might influence the performance of the assay.

**Measured for the 40 nt fragment of the Small RNA ladder

Physical Specifications					
Analysis run time	30 minutes	30 minutes	30 minutes	30 minutes	30 minutes
Number of samples	12 samples/chip	12 samples/chip	11 samples/chip	11 samples/chip	11 samples/chip
Sample volume	1 μL	1 μL	1 μL	1 μL	1 μL
Kit stability	4 months*	4 months*	4 months*	4 months*	4 months*
	*(Storage temperature see individual box)				

Protein solutions



Description

Order No.

Protein 230 Plus kits

For rapid sizing and analysis of proteins from 14 to 230 kDa.

Kit includes:

Reagents, supplies, 25 chips, 1 cleaning chip, 1 syringe and reagent kit guide.

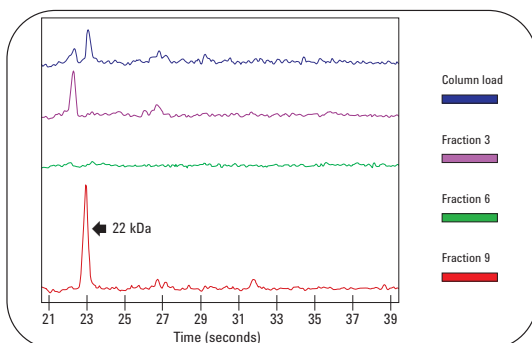
5067-1517

Protein 80 kits

For rapid sizing and analysis of proteins from 5 to 80 kDa.

Kit includes: Reagents, supplies, 25 chips, 1 cleaning chip, 1 syringe and reagent kit guide.

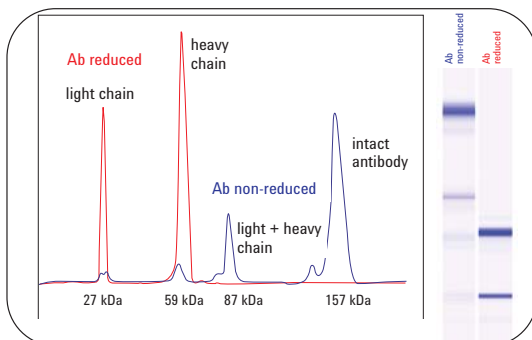
5067-1515



Various fractions were collected from an IMAC column eluted with an imidazole gradient (0-500 mM).

The protein of interest (22 kDa) was detected in fraction 9.

The electropherogram shows that the protein is approximately 80% pure and requires further purification.



Automated data analysis allows easy determination of protein purity, in this case an IgG antibody.

The software displays the relative concentration and percentage of total protein of each peak in the sample.

The ratio of the heavy to light chains is 2:1, as expected.

Protein cooled reagents and supplies

Description

Order No.

Cooled Protein 80 and supplies

5067-1516

For use with the Agilent 2100 bioanalyzer and Protein 80 Kits.
Comprises reagents and supplies box and appropriate cool pack.

Cooled Protein 230 and supplies

5067-1518

For use with the Agilent 2100 bioanalyzer and Protein 230 Kits.
Comprises reagents and supplies box and appropriate cool pack.

Analytical Specifications	Agilent Protein 80 Assay	Agilent Protein 230 Assay
Sizing range	5-80 kDa	14-230 kDa
Typical sizing resolution	10 %	10 %
Typical sizing accuracy	10 % CV (CAII, BLG)	10 % CV (BSA, CAII)
Sizing reproducibility	3 % CV (CAII, BLG)	3 % CV (BSA, CAII)
Sensitivity (Signal/Noise>3)	6 ng/μL CAII (15 ng/μL BSA) in PBS, 10 ng/μL (CAII) in 0.5 M NaCl (30ng/μL BSA in 0.5 M NaCl)	6 ng/μL CAII (15 ng/μL BSA) in PBS 30 ng/μL (BSA) in 0.5 M NaCl
Quantitative range	60-2000 ng/μL CAII in PBS	15-2000 ng/μL CAII, 30-2000 ng/μL BSA in PBS
Qualitative range	6-4000 ng/μL CAII and BLG	6-5000 ng/μL CAII, 15-5000 ng/μL BSA in PBS
Quantitation reproducibility	20 % CV (CAII, BLG)	20 % CV (BSA, CAII)

Physical Specifications		
Analysis run time	30 minutes	25 minutes
Number of samples	10 samples/chip	10 samples/chip
Sample volume	4 μL	4 μL
Kit stability	4 months (Storage temperature see individual box)	4 months (Storage temperature see individual box)

CAII = Carbonic Anhydrase, BSA = Bovine Serum Albumin, BLG = beta-Lactoglobulin

Cell solutions



Description

Order No.

Cell Kits

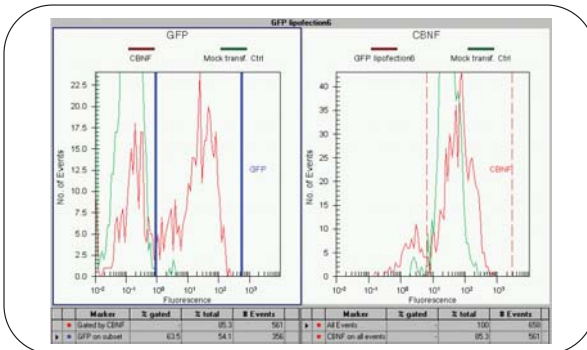
5067-1519

For analysis of cell fluorescence parameters.
Kit includes:
Reagents, 25 chips and reagent kit guide.

Cell Checkout Kits

5067-1520

For testing proper cell assay operation.
Kit includes:
Reagents, 7 Checkout chips, red beads, blue beads and reagent kit guide.



A counterstain with a red live-cell stain serves to detect both – GFP-positive and GFP-negative cells. This assay is useful in monitoring the success of a wide range of transfection experiments during its optimization process.

Cell solution extensions

Description

Order No.

Cell assay extension

G2948CA

Required to perform simple flow cytometric analysis with the Agilent 2100 bioanalyzer. (for "B" and "C" series instruments only). Includes:

Pressure cartridge

Cell fluorescence software

Cell fluorescence checkout kit

Cell test chip kit.

Start-up service

Specifications	Agilent Cell Kit
Analysis run time	30 minutes
Number of samples	6
Sample volume	10 μ L
Kit stability	4 months at 4 °C

Automated analysis of up to 6 cell samples in less than 30 minutes
Detection limit of 5,000 MESF (high sensitivity red channel, excitation 630 nm / emission 680 nm) and 2,000,000 MESF (blue channel, excitation 470 nm / emission 525 nm)
With a recommended cell density of 2×10^6 / mL usually 500–1,000 cells are detected per sample
Minimum cell throughput 2.5 cells/second

Services and software

Description	Order No.
DNA/RNA assays operational service 1 day advanced DNA or RNA assay familiarization and application consulting. Travel is included in price.	R1011A
Protein assays operational service 1 day advanced Protein assay familiarization and application consulting. Travel is included in price.	R1012A
Cell assays operational service 1 day advanced Cell assay familiarization and application consulting. Travel is included in price.	R1013A
2100 bioanalyzer system IQ IQ service for 2100 bioanalyzer expert bundle. Service covers hardware and software.	R1015A
2100 bioanalyzer system OQ/PV OQ/PV service for 2100 bioanalyzer expert bundle. Service tests hardware and software.	R1016A
1-Year extended life sciences service bundle support Service encompasses telephone support and on-site or off-site instrument repair, including labor, parts and travel.	G2940CA 11K
2-Year extended life sciences service bundle support Service encompasses telephone support and on-site or off-site instrument repair, including labor, parts and travel.	G2940CA 11L
2100 expert software upgrade to latest revision Package for upgrade to the latest revision of 2100 bioanalyzer system software (updates from older biosizing software revisions or 2100 expert software revisions B.01.xx to latest revision B.02.xx).	G2946CA
2100 expert security pack software Provides tools for 21 CFR Part 11 compliance of 2100 bioanalyzer expert software and all assays.	G2949CA
2100 expert data review software (Free of charge data analysis only version) Software for analysis of assay data files generated with 2100 bioanalyzer. Supplied without license with no ability to control instruments. No purchase required, download free of charge from: www.agilent.com/chem/2100-software-upgrade	

Accessories

Description	Order No.
Cell test chip kit For instrument troubleshooting & diagnostics. For cell assays Includes: Cell autofocus chip, electrode/diode test chip and documentation.	G2938-68200
Test chip kit For electrophoresis instrument troubleshooting & diagnostics. Includes: Autofocus chip, electrode/diode test chip, 5 leak current test chips and documentation.	G2938-68300
16-Pin bayonet cartridge Removable cartridge with detachable 16-pin electrode assembly for easy cleaning. For RNA, DNA and protein assays.	5065-4413
Pressure cartridge Removable cartridge with pressure adapter for cell assays. For use with an additional Agilent 2100 bioanalyzer (G2938C) in a multi-instrument system equipped with the cell assay extension (G2948CA).	5065-4492
Chip priming station Used to load gel matrix into a chip with a syringe provided with each LabChip kit. Includes: Priming station, stop watch and 1 syringe clip. For RNA, DNA and protein assays.	5065-4401
Electrode cleaner kit Used to load gel matrix into a chip with a syringe provided with each LabChip kit. Includes:	5065-9951

Spare parts

Description	Order No.
Adjustable clip For use with chip priming station. Used in combination with syringe to apply defined pressure for chip priming.	5042-1398
Gasket kit for chip priming station Includes: 1 syringe adapter, 10 gaskets and 1 mounting ring.	G2938-68716
Fuse for Agilent 2100 bioanalyzer power supply 1A/250 V	2110-0007
RS 232 Connector cable Connector cable between desktop or laptop PC and Agilent 2100 bioanalyzer in single-instrument system.	G2938-81605
Pressure adapter kit For use with pressure cartridge. Includes: 1 mounting ring and 5 pressure adapters with gaskets.	5065-4478
Vortex mixer adapter Replacement part for IKA vortexer. Foam insert and plastic head mount for vortexer. Designed to hold chip firmly in place while vortexing.	5065-9966

Application notes

Description	Publication number
DNA	
Quantitative analysis of PCR fragments with DNA 7500 LabChip kit	5968-7496EN
High precision restriction fragment sizing with DNA 12000 LabChip kit	5968-7501EN
Comparing the Agilent 2100 bioanalyzer performance to traditional DNA analysis	5980-0549EN
Agilent 2100 Bioanalyzer replaces gel electrophoresis in prostate cancer research	5988-1086EN
High resolution DNA analysis with the DNA 500 and DNA 1000 LabChip kits	5988-3041EN
Quantitative end-point RT-PCR gene expression using DNA 7500 LabChip kit	5988-3674EN
Development of meat speciation assays using the Agilent 2100 bioanalyzer	5988-4069EN
Analysis of genetically modified soya using the Agilent 2100 bioanalyzer	5988-4070EN
Detecting genetically modified organisms with the Agilent 2100 bioanalyzer	5988-4847EN
RNA	
Analysis of total RNA using the RNA 6000 LabChip kit	5968-7493EN
Analysis of messenger RNA using the RNA 6000 LabChip kit	5968-7495EN
Analysis of Cy5-labeled cRNAs and cDNAa using the RNA 6000 LabChip kit	5980-0321EN
Characterization of RNA quality using the RNA 6000 LabChip kit	5980-0472EN
Comparing performance of the Agilent 2100 bioanalyzer to traditional RNA analysis	5980-2206EN
The total RNA story	5988-2281EN
Interpreting mRNA electropherograms	5988-3001EN
Optimizing cRNA fragmentation for microarray experiments using 2100 bioanalyzer	5988-3119EN
Proteins	
Protein sizing and analysis using the Protein 200 LabChip kit	5988-0975EN
Differences and similarities between Protein 200 Assay and SDS-PAGE (tech note)	5988-3160EN
Absolute quantitation with the Protein 200 LabChip kit	5988-4021EN
Optimization of protein purification using the Agilent 2100 bioanalyzer	5988-4022EN
Comparison of different methods for purification analysis of a green fluorescent strep-tag fusion protein	5988-5025EN
Cells	
Apoptosis detection by annexin V and active caspase-3 with the 2100 bioanalyzer	5988-4319EN
Monitoring transfection efficiency by green fluorescence protein (GFP) detection	5988-4320EN
Detection of antibody-stained intracellular protein targets with the 2100 bioanalyzer	5988-4322EN
Article Reprints	
Lab-on-a-chip Technology: Applications for Life Sciences	5988-3035EN
Semi-quantitative reverse transcription-polymerase chain reaction with the 2100 bioanalyzer	5988-4556EN

For a full list of Application Notes, visit our web site at

www.agilent.com/chem/labonachip

For a list of over 5000 peer-reviewed publications mentioning the 2100 bioanalyzer use, visit our web site at

www.opengenomics.com/NucleicAcidAnalysis.asp

Kits for OFFGEL electrophoresis

Description

Order No.

Starter kit

Fractionation of protein or peptide samples. Kit includes IPG gel strips, well frames, cover seals, paper pads, cover fluid and reagents. Kit contains all components for fractionation and in-liquid recovery of 12 samples: three samples pH 3-10, 12 fractions; three samples pH 3-10, 24 fractions; three samples pH 4-7, 12 fractions; three samples pH 4-7, 24 fractions.

5188-6444

Low resolution kit, pH 3-10

Fractionation of protein or peptide samples into 12 fractions in the pH range 3-10. Kit includes IPG gel strips, well frames, cover seals, paper pads, cover fluid and reagents. Kit contains all components for fractionation and in-liquid recovery of 12 samples.

5188-6425

High resolution kit, pH 3-10

Fractionation of protein or peptide samples into 24 fractions in the pH range 3-10. Kit includes IPG gel strips, well frames, cover seals, paper pads, cover fluid and reagents. Kit contains all components for fractionation and in-liquid recovery of 12 samples.

5188-6424

Low resolution kit, pH 4-7

Fractionation of protein or peptide samples into 12 fractions in the pH range 4-7. Kit includes IPG gel strips, well frames, cover seals, paper pads, cover fluid and reagents. Kit contains all components for fractionation and in-liquid recovery of 12 samples.

5188-6427

High Resolution kit, pH 4-7

Fractionation of protein or peptide samples into 24 fractions in the pH range 4-7. Kit includes IPG gel strips, well frames, cover seals, paper pads, cover fluid and reagents. Kit contains all components for fractionation and in-liquid recovery of 12 samples.

5188-6426

OFFGEL protein test sample

Checkout sample for testing the performance of the 3100 OFFGEL fractionator. The checkout sample contains a single protein which will focus into only one fraction when used with the low resolution kit, pH 3-10.

5188-6428

Spare parts

Tray set

Four replacement trays.

G3100-60007

Electrode assembly

One fixed and one movable electrode, and one tray.

G3100-60002

Application notes

Description

Publication number

Combining immuno-depletion, protein and peptide OFFGEL electrophoresis for the efficient fractionation of plasma prior to LC-MS analysis

5989-6419EN

Efficient Protein Fractionation and Identification with the Agilent 3100 OFFGEL Fractionator

5989-5814EN

Efficient peptide fractionation and improved protein identification with the Agilent 3100 OFFGEL Fractionator

5989-5206EN

For a full list of posters, application notes and peer-reviewed literature visit our website at

www.agilent.com/chem/offgel

Learn more:

www.agilent.com/chem/labonachip

www.agilent.com/chem/offgel

Buy online:

www.agilent.com/chem/store

Find an Agilent customer center in your country:

www.agilent.com/chem/contactus

U.S. and Canada

1-800-227-9770

agilent_inquiries@agilent.com

Europe

info_agilent@agilent.com

Asia Pacific

adinquiry_aplsca@agilent.com

© Copyright 2007 Agilent Technologies

Printed in Germany, August 1, 2007

Publication Number 5989-6729EN



5989-6729EN



Agilent Technologies